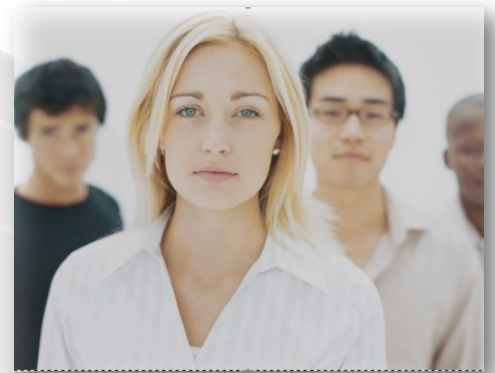


# ISO 14001:2004

## Environmental Management Systems

### Environmental Impacts Under Control

Every company has environmental impacts on its neighbors. From home-offices to Small to Medium sized businesses to large multi-national corporations. The ISO 14001 Environmental Management System (EMS) standard requires organizations to define their environmental policy within an organized system enabling companies to exercise consistent control over their environmental impacts. An effective EMS provides top management with a roadmap for managing environmental issues and identifying cost savings in areas such as; energy consumption, raw materials usage, and waste disposal. Environmental Management is not just for large production companies. ISO 14001 is flexible enough to apply to every business size in all industries;



### Everyone Benefits

- Increase Profits by reducing waste
- Optimize Energy and raw material usage
- Improve Corporate image
- Increase international business opportunities
- Reduce environmental liabilities
- Improve regulatory compliance
- Create Environmental continuous improvement systems

### ISOmatrix Consulting Services

Our simplified application of the ISO14001 standard allows for businesses of all sizes to implement a cost-effective, customized EMS that works for the good of your company and your neighbors. An ISOmatrix EMS architecture will allow you, the business owner, to make appropriate decisions based on your unique system and your unique situation.

ISOmatrix provides:

- Customized EMS Development and Implementation
- Educational seminars
- On-Site and Off-site training
- EMS Internal auditing
- EMS Maintenance

